

Corporate Member Feature: Shanghai Edging Architecture & Landscape Co.,Ltd.

July 8, 2022. Author: Shanghai Edging Architecture & Landscape Co.,Ltd.

Established on August 8, 2008, Shanghai Edging Architecture & Landscape Co.,Ltd. (hereinafter abbreviated to EDGING), Now EDGING has possessed class-A qualifications in both architecture and landscape. Also, it well meets the ISO9001, ISO45001 and ISO14001 certification standards, being one of the first national high-tech enterprises and the TOP 20 private survey and design enterprises in Shanghai.

EDGING adheres to the idea of “harmony, integrity, and innovation”, and cooperates closely with the landscape architecture planning and design team of the School of Design, Shanghai Jiao Tong University, and unite with experts from well-known universities at home and abroad to create a unique platform (The First Group of Landscape Architecture National Joint Demonstration Training Bases for Graduate Students-Shanghai Edging & Shanghai Jiao Tong University) for innovative design, engineering intelligence and talent incubation that integrates "Industry-University-Research-Application". EDGING boasts a multidisciplinary team, which enables it to provide a planning and design, architectural design, landscape design, interior design to landscape construction. EDGING boasts a multidisciplinary team, which enables it to provide a planning and design, tourism planning, architectural design, landscape design, interior design to landscape construction.

Over years, based on technology integration and innovative thinking, EDGING team has played a leading role in urban renovation, park planning and architectural design, tourism and leisure space design, Chinese-style landscape and architectural design, sustainable landscape design and construction, etc. It has presented so many powerful, exemplary and outstanding works, which spread throughout the Yangtze River Delta and even far to the Southeast Asia. Till now, EDGING works have won more than 70 awards, including ten IFLA awards and two BALI awards as well as six first prizes and seventeen second prizes in China.

Featured Projects

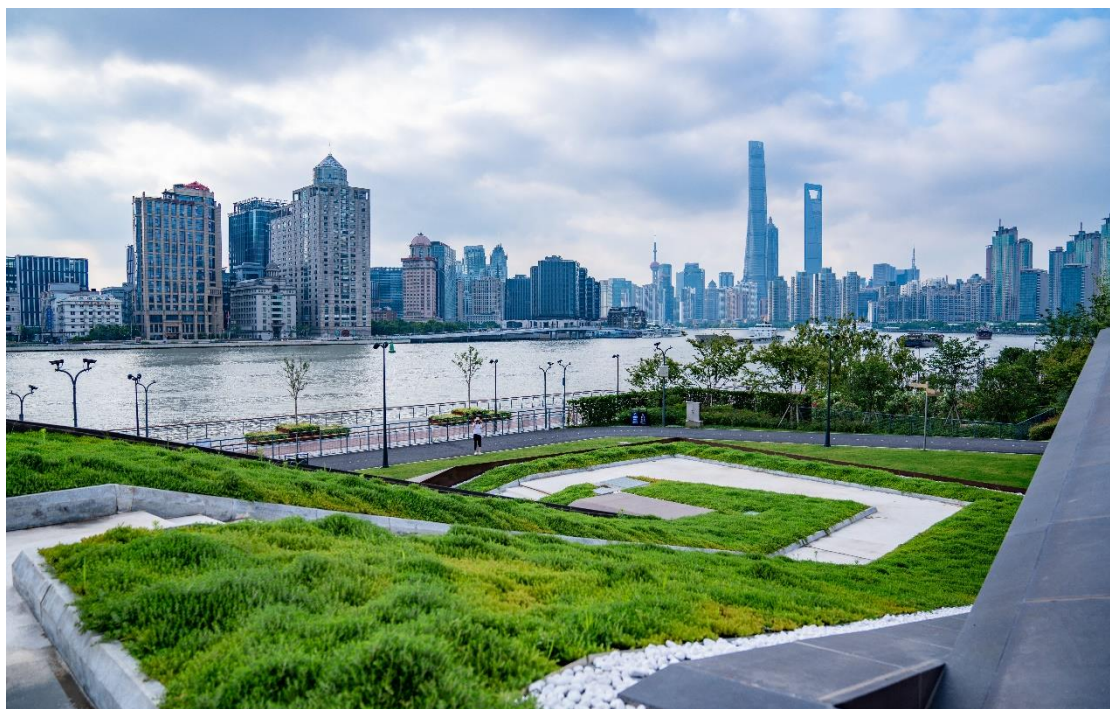
Memory·Fusion·Symbiosis——Linking up the pearls on the East Bank of the Huangpu River: Yangjing, Zhongzhan and Yaohua Park, Shanghai, China.



In 2018, after 15 years of planning and construction, the riverside public open spaces within the 45 kilometers on both sides of the Huangpu River in Shanghai were connected. This realized the vision of "returning the river to the people and the scenery to

the city". The construction of the three parks in this project have connected three important "key points" along the 21 km coastline on the East Bank of the Huangpu River.

The design artfully solved the problem of height differences between green spaces and the adjacent high-piled wharfs. It constructed a three-dimensional, multi-leveled system for cycling, running and walking. These "three roads" are connected with the river, water, flowers, and woods. They link up experiences for all ages, including activities that use all of the senses.



The project organically renews the riverside's industrial shoreline, restores the environmental foundation on which the riverside space is based, and allows the riverside to become the ideal top-choice for public leisure.

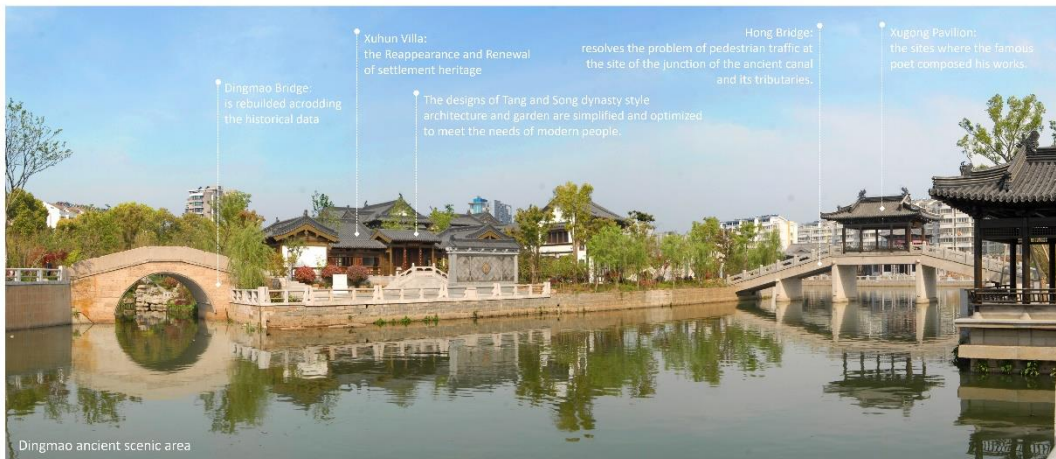
With the cooperation of many multidisciplinary-professional design and research teams, we created an 180-degree panoramic

balcony along the riverfront. The main cooperative unit of the project is Shanghai Jiao Tong University School of Design, and the project was awarded the IFLA award of excellence in the park and open space category in 2019.

The Throat of the Jiangnan Canal — the Renewal of the Landscape of the Middle Section of the Ancient Canal of Zhenjiang, Zhenjiang, China.



Dingmao ancient scenic area, integrates the form of the "Landscape of a region with many rivers and lakes" into the overall scheme of the "landscape city" of Zhenjiang. According to historical data, architecture and gardens are rebuilt according to the styles of the Tang and Song dynasties.



Protection and reuse of historical relics: Ancient stones excavated from the historical site of the Dingmao Bridge were used to rebuild the bridge. This not only reinforces the historical significance, but also forms the sense of belonging, and identity of the place.





An important part of the Grand Canal of China—a world cultural heritage site—is the ancient canal of Zhenjiang. Over time, the canal’s function as a lane for shipping has departed from the stage of history. The project for improving the landscape of the middle section of the ancient canal of Zhenjiang is the initial part of a construction project for creating a Zhenjing ancient canal landscape belt. And after 10 years of continuous construction on the site, the vitality of the canal has been restored.

- (1) The project has enhanced the capacity for flood resistance of the city center and its ability to prevent waterlogging.
- (2) The project has improved the open space plan of Zhenjiang city, which is characterized as generally being a mountainsand-waters city.
- (3) The project included the construction of the city’s primary public waterfront activity area.
- (4) Through controlling pollution in the watershed of the ancient canal, as well as through flood management, and construction of an ecological water bank, the project has improved the water quality and the environment.
- (5) This project classified, protected and effectively used natural heritage resources, the heritage of water conservancy facilities,

of settlements, and other cultural heritage resources.

With the cooperation of Shanghai Jiao Tong University, the project awarded the IFLA award of excellence in the park and open space category in 2019.

Landscape Design of Zhangjiagang Bay Ecological Rehabilitation Project —— Exploration of Landscape Approach for Green Development of Yangtze River Waterfront. Jiangsu, China.





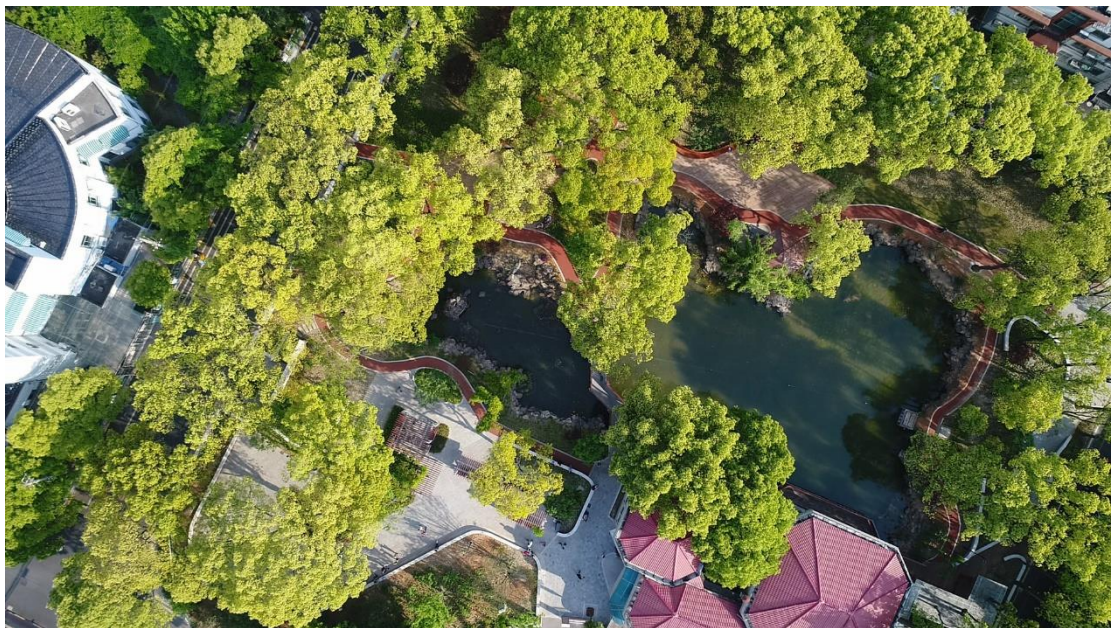
Aiming at the national strategy of green development of Yangtze River Economic Belt with ecological priority, this project takes the ecological protection and restoration of the Yangtze River as the core, and creates an open and composite waterfront space based on the spatial security strategy gradient to cope with the change of water level. Exploring the formation of an interdisciplinary, multi-professional, and international school-enterprise collaboration model, and innovatively responding to issues like "poor ecological base, cluttered industrial remains, as well as soil desertification", drives surrounding green transformation and tourism development of rural industry. Meanwhile, it realized the vision of "returning green to the beach and returning the river to the people", and also improved the well-being of residents in the harbor city.





The project site is located on the south bank of the Yangtze River and occupies a total area of 1.26 square kilometers, including 9 kilometers of waterfront land along the banks, tidal lands as well as ponds for aquaculture. In March 2021, the project was shortlisted as an excellent example of the practical application of the United Nations Sustainable Development Goals and provides a valuable reference for the exploration of green development in the world's river basins. The cooperative unit of the project is The School of Design, Shanghai Jiao Tong University.

A Memory Garden for Three Generations: The Design Renewal of a 'Renle' Neighborhood Park in Shanghai's Songjiang District, Shanghai, China.





“Renle” Community Park is located in the Renle Community Center, the most aged area. Its area is 5,000m², serving as the only green space within the community. The park holds the lifetime memories of three generations.





The foundation of this project rests on “thick data,” derived from the behavior and demands of community residents. Based on the analysis of statistical models, Renle Park is renewed, becoming a complex variable space through spatial segmentation and staggered usage. This produces a rich and vibrant “public living room” for the community. At the same time, the project explores the formation of a governmental model for the co-construction, co-governance, and sharing of community public space. It has become the primary symbol and guide for the “Songjiang Kids” special operation for green activation. With the cooperation of Shanghai Jiao Tong University, the project awarded the IFLA award of excellence in the communities category in 2021.

Pocket Parks in The Old City of Kunshan — A Landscape Design for the Huayi Lane, the Zhiqu Street Corner, the Yun Garden, the Yin Garden, and the Fuchun Garden. Jiangsu, China





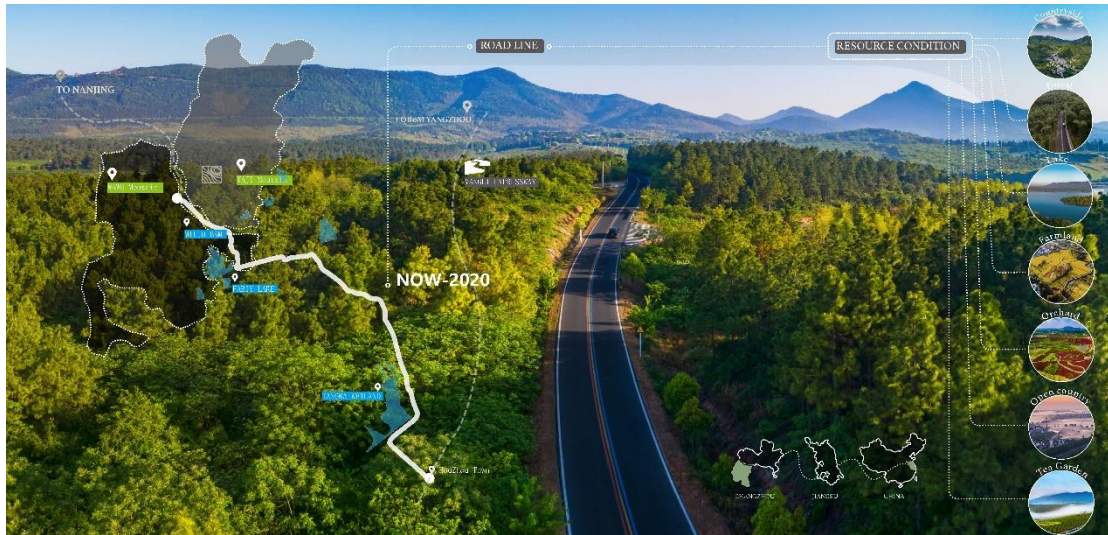
Facing problems like “the dilution of urban cultural memory in the old city and the prominent imbalance between the supply and demand of public space”, Kunshan Government has launched the “Kun Xiaowei - Shared Lu City” micro renewal plan. As a demonstration project, it aims to use “acupuncture style” interventions in small and micro public spaces, and activate city blocks through public spaces of points, belts, and zones. A joint path of "design + management" was explored, guiding the public representatives to participate in the whole process. With "small investment, big change", the project receives positive reactions from local society and government, enhances the sense of achievement and happiness of the residents in old urban areas, and promotes high standard and systematic construction.



The project site is located in the old city of Kunshan, including the Yun Garden, the Yin Garden, the FuChun Garden, the Zhiqiu Street Corner and the Huayi Lane, with a total area of 9,244 square meters. Under the cooperation of Shanghai Jiao Tong University, the project awarded the first prize of Shanghai Excellent Engineering Survey and Design, one of Top Ten People's Projects and one of "most beautiful pocket parks" in Suzhou, and has been recommended as a demonstration project by the State Ministry of Housing and Urban-Rural Development Construction.

The Wawu Mountain's Road to Happiness —— Exploration of a Landscape Approach to Rural Tourism and Development in Liyang City, Liyang, China.

Liyang City is located in the Yangtze River Delta area, home to rich natural resources and an overall landscape pattern of “three mountains, one river and six fields”. Given the public’s urgent need for rural tourism and for road-trip-type tourism, the construction of the “Road to Happiness” is conducive for the promotion of the balanced development of tourism throughout the region.



Cultural Theme Node—The Miluo Dam Tea House

Located at the area that links the Wawu and Yuyi mountains. Historically, this was an important place for poets to sing and recite poems. The design of the tea house is fully imbued with traditional Chinese cultural charm and integrates the natural elements of mountains and water.

In order to create a “Road to Happiness on Wawu Mountain” and explore a landscape approach to rural tourism development the design proposed: 1. Advance the goal and strategy of “Tourism + Ecology + Industry + and Sustainable Development,” and adopt the landscape mode of “line + point” to build a slow-traffic rural tourism corridor and an atmospheric courier station; 2. Build diverse habitats and migration corridors to restore biodiversity; 3. Utilize agricultural resources and folk culture to promote multi-enterprise integration encompassing rural tourism, cultural and creative industries, and agriculture; 4. Adhere to low-maintenance and low-impact architectural design, plant collocation and material selection. In collaboration with the School of Design of Shanghai Jiao Tong University, the project awarded the first prize of Shanghai Excellent Engineering Survey and Design, and the IFLA honorable mention in the economic viability category in 2020.



A Scenic-Centered Node—The Fairy Lake Courier Station

This is located at the best spot for observing Fairy Lake. It plays a scenic-centered role as the prototypical landscape node along the Tian Road segment of Road to Happiness. There is a coffee shop provide visitors with a perfect place to stay and relax.



Service and parking node – The Tangma Automobile Camp

Located on the west side of Road of Happiness adjacent to Tangma Reservoir. This RV camp meets the needs of multiple types of vehicles and different sorts of parking. It also offers diversified recreation.

